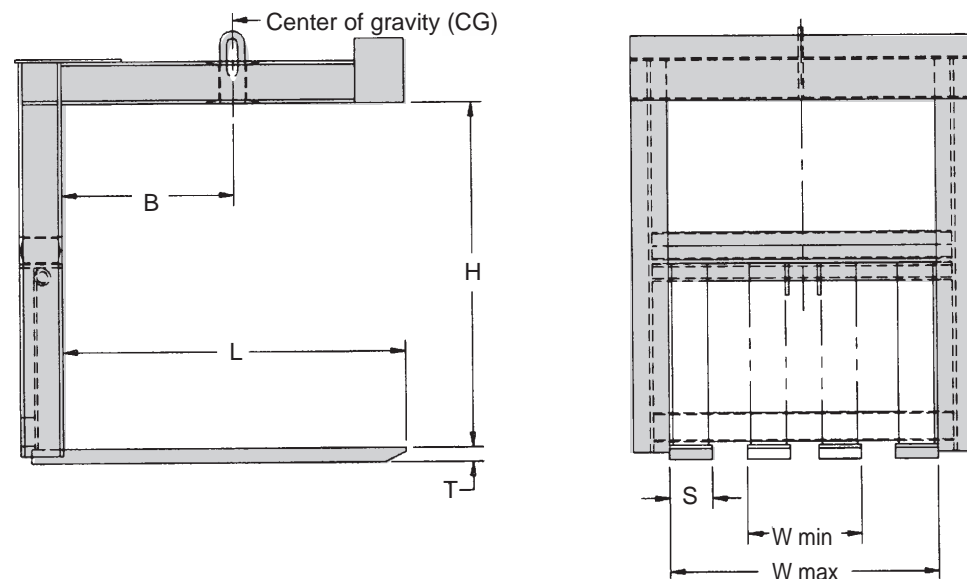


MODEL 901 ADJUSTABLE FORK PALLET LIFTER



CAPACITY (TONS)	FORK SIZE T x S (IN.)	FORK LENGTH L (IN.)	CAPACITY (TONS)	FORK SIZE T x S (IN.)	FORK LENGTH L (IN.)	CG DIM. B (IN.) *	FORK LENGTH L (IN.)
1/2	2 x 4 1/2	24	5	2 1/2 x 5 1/2	24	12 1/2	24
	2 x 4 1/2	30		2 1/2 x 5 1/2	30	15 1/2	30
	2 x 4 1/2	36		2 1/2 x 5 1/2	36	18 1/2	36
	2 x 4 1/2	42		2 1/2 x 5 1/2	42	21 1/2	42
	2 x 4 1/2	48		2 1/2 x 6 1/2	48	24 1/2	48
1	2 x 4 1/2	24	7 1/2	2 1/2 x 6 1/2	54	27 1/2	54
	2 x 4 1/2	30		2 1/2 x 6 1/2	60	30 1/2	60
	2 x 4 1/2	36		2 1/2 x 6 1/2	24		
1 1/2	2 x 4 1/2	42	10 **	2 1/2 x 6 1/2	30		
	2 x 4 1/2	48		2 1/2 x 6 1/2	36		
	2 x 4 1/2	24		2 1/2 x 6 1/2	42		
	2 x 4 1/2	30		2 1/2 x 6 1/2	48		
	2 x 4 1/2	36		2 1/2 x 9	54		
2	2 x 4 1/2	42	15	2 1/2 x 9	60		
	2 x 4 1/2	48		2 1/2 x 9	24		
	2 x 4 1/2	24		2 1/2 x 9	30		
	2 x 4 1/2	30		2 1/2 x 9	36		
	2 x 4 1/2	36		2 1/2 x 9	42		
3	2 x 4 1/2	42		2 1/2 x 9	48		
	2 x 4 1/2	48		3 x 9	54		
	2 x 4 1/2	24		3 x 9	60		
	2 x 4 1/2	30		3 x 9	24		
	2 x 4 1/2	36		3 x 9	30		
	2 x 4 1/2	42		3 x 9	36		
	2 x 5 1/2	48		3 x 9	42		
2 x 5 1/2	54		3 x 10	48			
2 x 5 1/2	60		3 x 10	54			
				3 x 11	60		

* When selecting pallet lifters, safety considerations require that the load's center of gravity be located under the pallet lifter's center of gravity. Note the B dimension on the chart above.
 ** A handcrank fork adjustment mechanism is included as standard on all lifters 10 tons and over.

© 2000 Bushman Equipment, Inc.



Custom Designed Material Handling Solutions

P.O. Box 309 • Butler, WI 53007-0309
 262-790-4200 • Fax 262-790-4202
 E-Mail: custinfo@bushman.com • www.bushman.com

Custom Designed Material Handling Solutions

PALLET LIFTERS

Pallet lifters are a versatile tool for loading, unloading, and transporting materials of various kinds and sizes. They maximize the efficiency of overhead material handling systems and are frequently employed in areas that have narrow storage aisles or are inaccessible with fork lift trucks.

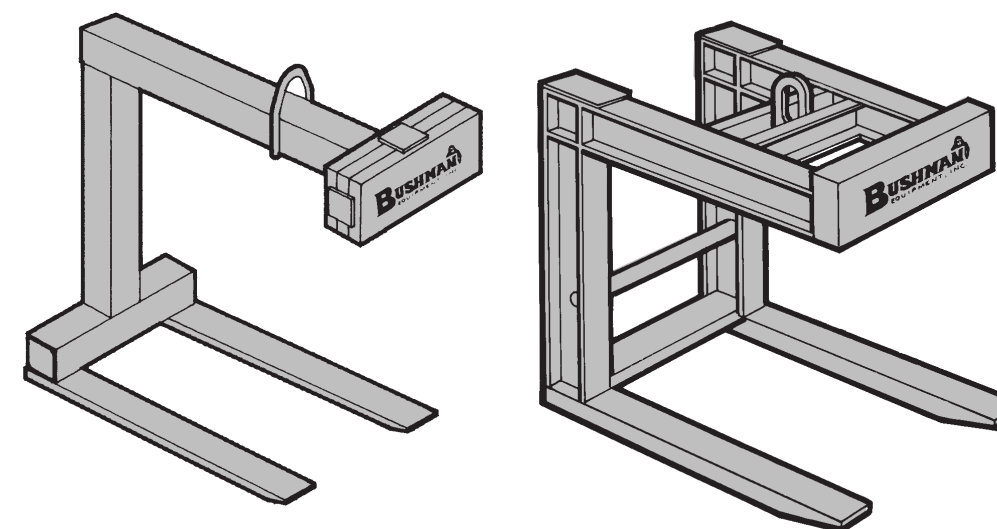
Bushman pallet lifters are designed to hang level when empty and when properly loaded. They feature high strength steel forks and welded steel construction which provide maximum strength, low unit weight and years of reliable service. All Bushman pallet lifters meet or exceed the requirements of ASME-ANSI Standard B30.20.

Bushman pallet lifters can be furnished with a variety of options including:

- Low headroom design
- Handwheel or motorized fork adjustments
- Multiple fork units for unique load configurations
- Designs which function as a combination pallet lifter and coil handling device

In addition to the standard products shown here, Bushman provides custom engineered designs to meet specific, dimension, capacity and application requirements. Please contact the factory for technical assistance with special sizes and requirements.

MODEL 900 FIXED FORK PALLET LIFTER



Single Member Model 900

Double Member Model 900

Standard model 900 pallet lifters with capacities up to 4,000 pounds are constructed with a single vertical member. Non-standard pallet lifters and all lifters with capacity over 4,000 pounds are constructed with a double vertical member.

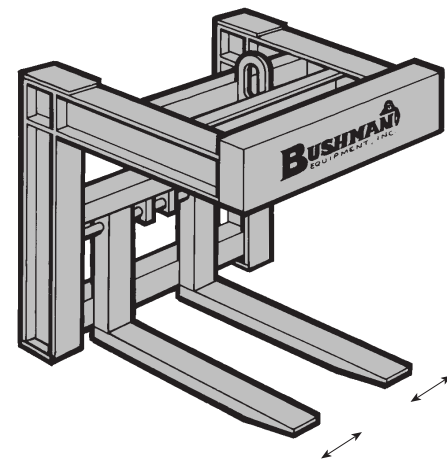
The model 900 fixed fork pallet lifter utilizes stationary forks to handle palletized loads of various configurations.

The chart on the next page shows capacities and dimensions for the most frequently requested sizes. For information about special options and sizes not shown, please complete the product specification chart on the next page and then call Bushman.

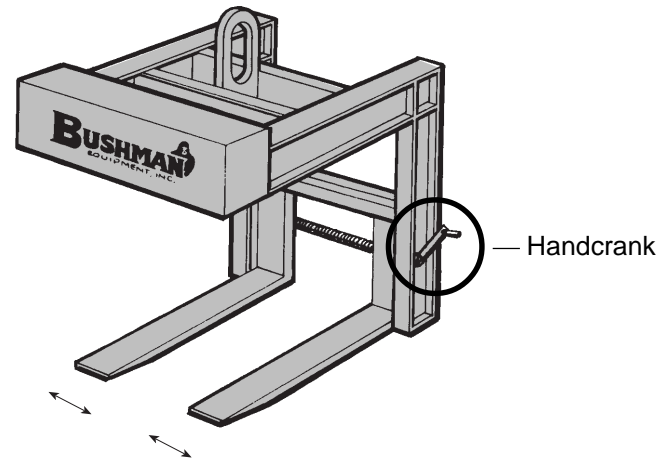
Custom Designed Material Handling Solutions

P.O. Box 309 • Butler, WI 53007-0309
 262-790-4200 • Fax 262-790-4202
 E-Mail: custinfo@bushman.com • www.bushman.com

MODEL 901 ADJUSTABLE FORK PALLET LIFTER



Model 901
Adjustable Fork Pallet Lifter



Model H-901
Adjustable Fork Pallet Lifter With Handcrank

Model 901 adjustable fork pallet lifters enable the operator to use one lifter to handle pallets of various configurations by simply sliding the forks to the desired position.

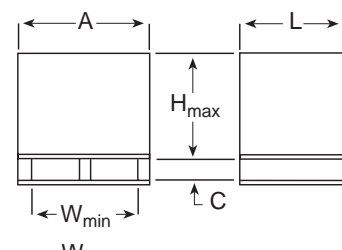
The model H-901 is an adjustable pallet lifter which permits the operator to move the forks with a handwheel or handcrank, an ergonomic feature which improves operator efficiency and safety. This option is highly recommended for units with capacities over 6,000 pounds and is standard on models over 10 tons. The fork adjustment mechanism can also be motorized.

For information about special options and sizes not shown, please complete the product specification chart below and then call Bushman.

PRODUCT SPECIFICATION CHART

LOAD DATA

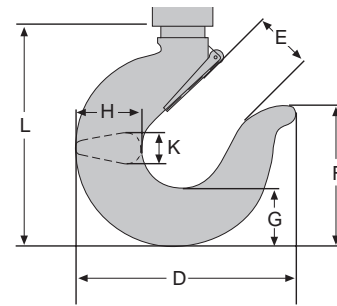
Maximum weight
_____ lb.



- A Maximum width of load _____ in.
- L Maximum length of load _____ in.
- H_{max} Maximum height of load _____ in.
- C Vertical fork clearance inside pallet _____ in.
- W_{min} Minimum inside dimension _____ in.
- W_{max} Maximum inside dimension _____ in.

HOOK DATA

Capacity _____ tons
Mfgr. _____

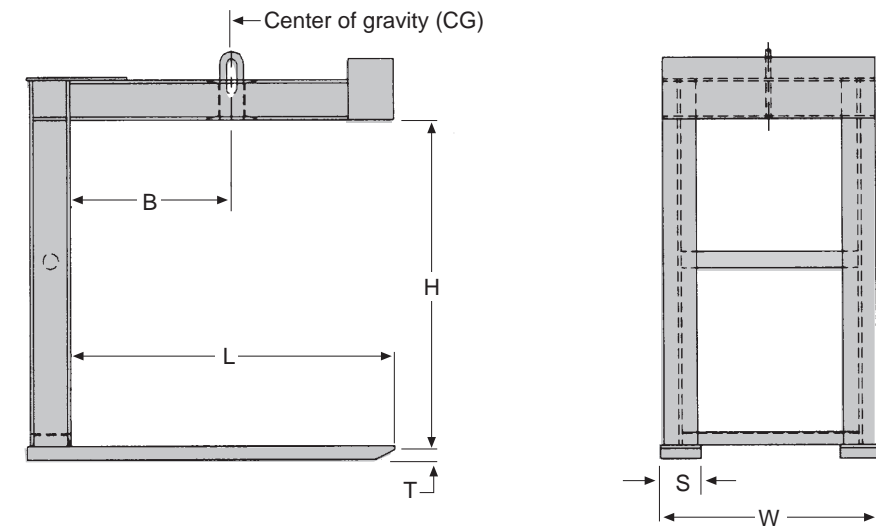


- List dimensions to ensure proper bail fit.
- D _____ in. H _____ in.
 - E _____ in. J _____ in.
 - F _____ in. K _____ in.
 - G _____ in. L _____ in.

The descriptions and specifications contained in this manual were in effect at the time of printing. Bushman Equipment, Inc. reserves the right to change specifications and designs at any time without notice and without incurring any obligations.

All Bushman pallet lifters are designed and manufactured in accordance with ASME-ANSI Standard B30.20.

MODEL 900 FIXED FORK PALLET LIFTER



CAPACITY (TONS)	FORK SIZE T x S (IN.)	FORK LENGTH L (IN.)	CAPACITY (TONS)	FORK SIZE T x S (IN.)	FORK LENGTH L (IN.)	CG DIM. B (IN.) *	FORK LENGTH L (IN.)
1/2	2 x 4 1/2	24	5	2 1/2 x 5 1/2	24	12 1/2	24
	2 x 4 1/2	30		2 1/2 x 5 1/2	30	15 1/2	30
	2 x 4 1/2	36		2 1/2 x 5 1/2	36	18 1/2	36
	2 x 4 1/2	42		2 1/2 x 5 1/2	42	21 1/2	42
	2 x 4 1/2	48		2 1/2 x 5 1/2	48	24 1/2	48
1	2 x 4 1/2	24	7 1/2	2 1/2 x 5 1/2	54	27 1/2	54
	2 x 4 1/2	30		2 1/2 x 6 1/2	60	30 1/2	60
	2 x 4 1/2	36		2 1/2 x 6 1/2	24		
1 1/2	2 x 4 1/2	42	10	2 1/2 x 6 1/2	30		
	2 x 4 1/2	48		2 1/2 x 6 1/2	36		
	2 x 4 1/2	48		2 1/2 x 6 1/2	42		
2	2 x 4 1/2	24	15	2 1/2 x 6 1/2	48		
	2 x 4 1/2	30		2 1/2 x 9	54		
	2 x 4 1/2	36		2 1/2 x 9	60		
3	2 x 4 1/2	42	15	2 1/2 x 9	24		
	2 x 4 1/2	48		2 1/2 x 9	30		
	2 x 4 1/2	48		2 1/2 x 9	36		
	2 x 4 1/2	48		2 1/2 x 9	42		
	2 x 4 1/2	30		2 1/2 x 9	48		
	2 x 4 1/2	36		3 x 9	54		
	2 x 4 1/2	42		3 x 9	60		
2 x 5 1/2	24	3 x 9	24				
2 x 5 1/2	30	3 x 9	30				
2 x 5 1/2	36	3 x 9	36				
2 x 5 1/2	42	3 x 9	42				
2 x 5 1/2	48	3 x 10	48				
2 x 5 1/2	54	3 x 10	54				
2 x 5 1/2	60	3 x 10	60				

* When selecting pallet lifters, safety considerations require that the load's center of gravity be located under the pallet lifter's center of gravity. Note the B dimension on the chart above.

Authorized Sales & Service
J. HERBERT CORPORATION
 Call 1-800-255-0588
 407-846-0588 Fax: 846-1066
 info@jherbertcorp.com
 Visit us online:
 www.jherbertcorp.com

Custom Designed Material Handling Solutions
BUSHMAN
 EQUIPMENT, INC.
 P.O. Box 309 • Butler, WI 53007-0309
 262-790-4200 • Fax 262-790-4202
 E-Mail: custinfo@bushman.com • www.bushman.com