

Lifting Magnets

Authorized Sales & Service
J. HERBERT CORPORATION
 Call 1-800-255-0588
 407-846-0588 Fax: 846-1066
 info@jherbertcorp.com
 Visit us online:
 www.jherbertcorp.com



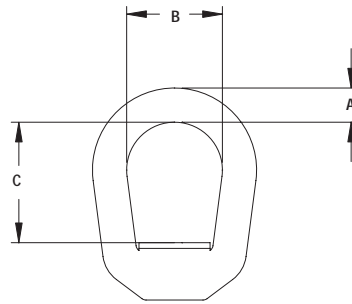
The Caldwell Group • 800-628-4263 Fax 815-229-5686
 Rig-Master® Section
 Master Catalog MC-607

Model RELM - Round Electric Lift Magnets



PRODUCT FEATURES:

- For use on flat material only.
- 115v. AC required.
- On, off and release functions are recessed to protect against accidental operation.
- Easy to use.
- Conforms to ASME B30.20.



SPECIFICATIONS

Model Number	Lift Capacity Plate (lbs.)	Watts	Unit Diameter (in.)	Overall Height (in.)	Bail Opening (in.)			Weight (lbs.)
					A	B	C	
RELM06	1,200	33	6-3/8	11-1/2	3/4	2	2-1/2	50
RELM08	2,500	51	8-3/8	12-7/8	3/4	2-1/4	2-7/8	75
RELM12	6,000	149	12-1/4	15-1/4	7/8	2-1/2	3-3/8	210
RELM16	9,000	260	16-3/4	15-1/2	7/8	2-1/2	3-1/2	300
RELM20	13,000	260	20	14-1/8	1	3-1/8	4	615

Note: RELM's are not intended to be used as scrap handling magnets.

WARNING

All capacities are based on lifting clean, smooth, flat low-carbon steel plate with the full area of the magnet's lifting surface in contact with the load. Derating is required for plates or other loads with rust or scale. Do not use on material thinner than 1/4".

Note: When lifting 4' x 8' sheets or any sheets over 4' x 8', use 2 or more lifts on a spreader bar to prevent sheet flexing, sagging, or peel-off. Material less than 3/8" thick is susceptible to magnet bleed through, resulting in two sheets lifted at once.