

Coil Lifters and Upenders



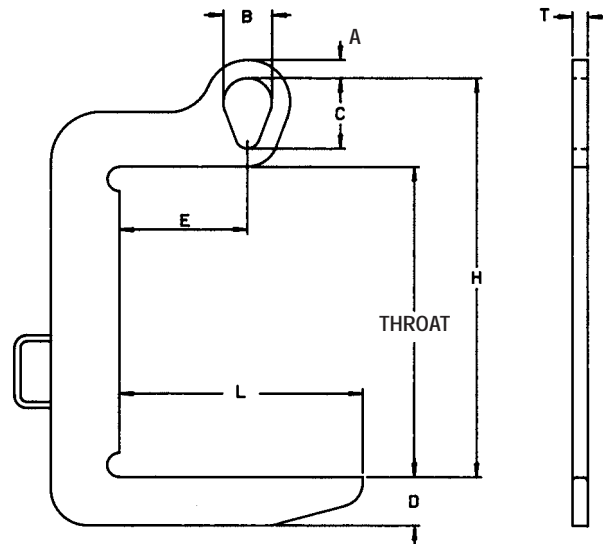
Model 82NC - Narrow Coil "C" Hook



PRODUCT FEATURES:

- Handles narrow coils with less coil edge damage.
- More durable than web slings.
- Lightweight for easier handling.
- Built in guide handle for ease of coil positioning.
- Available with optional curved coil saddle.
- Inside radius on hooks avoid coil edge contact.
- Designed and manufactured to ASME B30.20.

IN-STOCK PROGRAM



*Will not hang level when empty.

CAUTION
Center of gravity must be centered under crane hook to prevent tilting of the lifter & load.

NOTE: "E" dimension equals one-half the dimension of "L" + 1/2".

SPECIFICATIONS

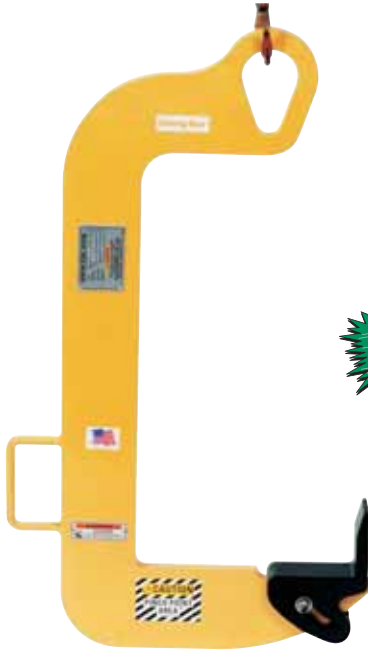
Model Number	Capacity In Tons	Coil Width Max.	Throat	Dimensions In Inches								Weight (lbs.)
				Lifting Arm Plate		Headroom H	Bail Dimensions					
				Length L	Depth D		A	B	C	T		
82NC-1/2-8	1/2	8	14-1/2	8	2-1/4	18-1/2	13/16	2	3-1/4	1/2	14	
82NC-1/2-12		12	14-1/2	12	2-5/8	18-1/2	13/16	2	3-1/4	1/2	17	
82NC-1-8	1	8	17-1/2	8	2	21-1/2	13/16	2	3-1/4	1/2	15	
82NC-1-16		16	17-1/2	16	2-1/2	21-1/2	13/16	2	3-1/4	1/2	20	
82NC-2-8	2	8	19-1/2	8	2-1/8	24-9/16	1	2-9/16	4-1/16	3/4	22	
82NC-2-16		16	19-1/2	16	3	24-9/16	1	2-9/16	4-1/16	3/4	40	
82NC-3 1/2-12	3-1/2	12	21-1/2	12	2-7/8	28-1/8	1-3/16	3-5/8	5-5/16	1	50	
82NC-3 1/2-16		16	21-1/2	16	3-3/8	28-1/8	1-3/16	3-5/8	5-5/16	1	63	
82NC-5-16	5	16	25-1/2	16	3-1/2	32-13/16	1-1/2	4	5-13/16	1-1/4	94	
82NC-5-20		20	25-1/2	20	4	32-13/16	1-1/2	4	5-13/16	1-1/4	110	

Coil Lifters and Upenders



The Caldwell Group • 800-628-4263 Fax 815-229-5686
 Strong-Bac® Section Master Catalog MC-607

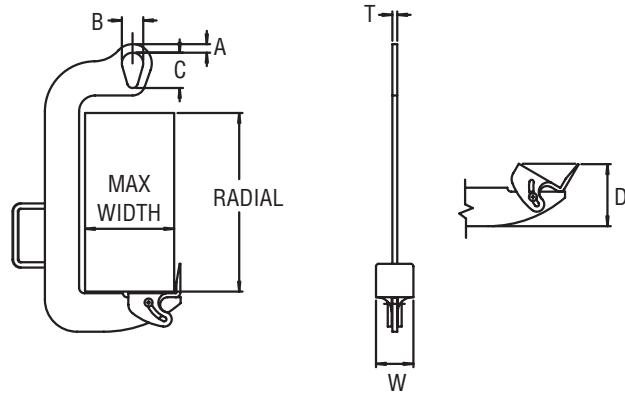
Model 80H - Dixon Coil Hook with Pivoting Wedge



IN-STOCK PROGRAM

PRODUCT FEATURES:

- Easy horizontal to vertical up-ending of coils.
- Pivoting wedge for easy tilting of stacked coils.
- Wedge acts as retainer.
- Efficient and easy to use.
- Popular for use with small, lightweight coils.
- For use where overhead clearance is limited.
- Specially designed heat treated pivoting wedge.
- Designed and manufactured to ASME B30.20.



SPECIFICATIONS

Model Number	Capacity In Tons	Dimensions In Inches									
		Max. Width	Max. Radial	Min. I.D.	A	B	C	D	T	W	Weight (lbs.)
80H-1/2-6/13	1/2	6	13	9	13/16	2	3-5/16	6	1/2	3-1/2	20
80H-1/2-12/13	1/2	12	13	13	13/16	2	3-5/16	6	1/2	3-1/2	28
80H-1-8/16	1	8	16	10	13/16	2	3-5/16	6	1/2	3-1/2	23
80H-2-10/18	2	10	18	12-1/2	1	2-5/8	4	6-3/4	3/4	2	42
80H-3.5-12/20	3-1/2	12	20	14-1/2	1-3/16	3-5/8	5-5/16	7-3/4	1	2-1/2	80

Other sizes available.

EASY HORIZONTAL TO VERTICAL MOVEMENT. DO NOT USE FOR VERTICAL TO HORIZONTAL MOVEMENT.



Providing spacer blocks between stacked coils permits easy insertion of the wedge. Lightweight and pivoting wedge makes it easy to position the hook.



With the hook in place, the wedge pivots as the lift is started, and the coil begins to turn to a vertical position for transporting it.



Coil is in vertical position after being lifted from its pallet. The weight of the coil holds the pivoting wedge in the vertical position during transportation.



Coil being loaded on a stock reel. Hook is easily removed from the coil after releasing the hoist.

Coil Lifters and Upenders

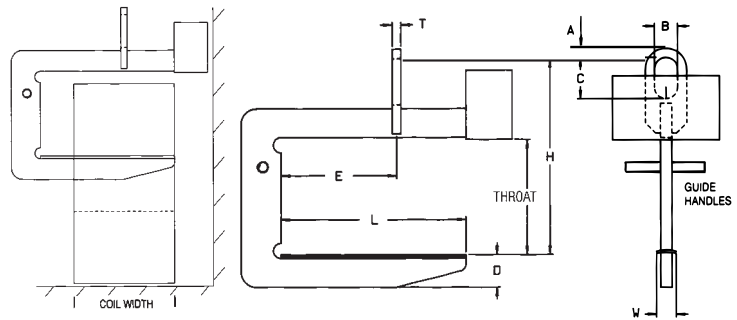
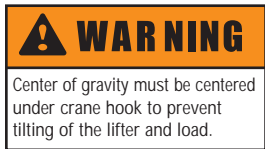


Model 82 - Heavy Duty "C" Hook



PRODUCT FEATURES:

- Designed for heavy duty applications.
- High tensile alloy steel plate reduces physical size and weight.
- Counterbalanced to hang level.
- Inside radius on hooks avoid coil edge contact.
- Curved coil saddle is standard.
- Guide handles for ease of coil positioning.
- Handles a wide range of coil widths.
- Available with optional padding for additional coil protection.
- Designed and manufactured to ASME B30.20.



NOTE: "E" dimension is always one-half of maximum coil width.

SPECIFICATIONS

Model Number	Capacity In Tons	Dimensions In Inches											Weight (lbs.)
		Coil Width		Throat	Lifting Arm			Headroom H	Bail Dimensions			Thk. T	
		Max.	Min.		Length L	Depth D	Width W		Opening				
82-5-36	5	36	24	24	30	5-5/16	4	37-3/8	1-1/2	4	7	1-1/4	420
82-5-48		48	30	24	39	6-1/8	4	38	1-1/2	4	7	1-1/4	584
82-5-60		60	36	24	48	6-9/16	4	38-1/2	1-1/2	4	7	1-1/4	680
82-7 1/2-36	7-1/2	36	24	24	30	5-5/8	4	37-1/2	1-1/2	4	7	1-1/2	615
82-7 1/2-48		48	30	24	39	6-5/16	4	38-1/4	1-1/2	4	7	1-1/2	774
82-7 1/2-60		60	36	24	48	6-5/16	4	39	1-1/2	4	7	1-1/2	942
82-10-48	10	48	30	24	39	7-1/4	4	41-1/4	2	5	9	1-3/4	928
82-10-60		60	36	24	48	7-1/4	4	41-1/4	2	5	9	1-3/4	1295
82-10-72		72	42	24	57	7-1/4	4	42-1/2	2	5	9	1-3/4	1616
82-15-48	15	48	30	30	39	7-1/4	4	47-7/8	2-1/4	5	9	1-3/4	1450
82-15-60		60	36	30	48	8	4	48	2-1/4	5	9	1-3/4	1824
82-15-72		72	42	30	57	8-3/4	4	48-3/4	2-1/4	5	9	1-3/4	2227
82-20-60	20	60	36	30	48	9-1/8	4	52-1/8	2-1/4	6	12	2	2175
82-20-72		72	42	30	57	10	4	52-5/16	2-1/4	6	12	2	2625
82-25-60	25	60	36	34	48	9	4	57-3/4	2-1/2	6	14	2-1/4	2820
82-25-72		72	42	34	57	9-3/4	4	58-1/2	2-1/2	6	14	2-1/4	3570
82-30-60	30	60	36	34	48	9-7/8	4	58-3/4	2-3/4	6	14	2-1/2	3180
82-30-72		72	42	34	57	10-5/8	4	59-3/8	2-3/4	6	14	2-1/2	3800
82-40-72	40	72	42	38	57	11	5	68	3-1/4	7	18	3	5350
82-50-84	50	84	48	40	64-1/2	13	6	71-7/8	3-3/4	7	18	3	7470

Other sizes available, consult factory.

Coil Lifters and Upenders



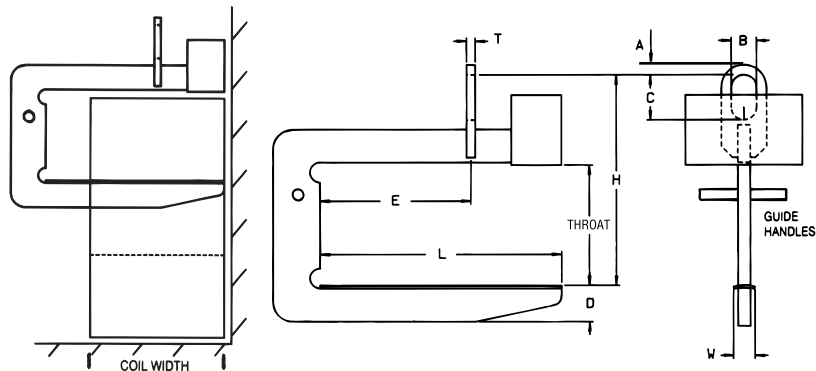
Model 82RC - Close Stacking "C" Hook



PRODUCT FEATURES:

- Recessed counterweight allows for close stacking of coils which maximizes floor space.
- Handles a wide range of coil widths.
- Designed for heavy duty application.
- High tensile alloy steel plate reduces physical size and weight.
- Counterbalanced to hang level.
- Inside radius on hooks avoid coil edge contact.
- Curved coil saddle is standard.
- Guide handle for ease of coil positioning.
- Available with optional padding for additional coil protection.
- Designed and manufactured to ASME B30.20.

WARNING
Center of gravity must be centered under crane hook to prevent tilting of the lifter and load.



NOTE: "E" dimension is always one-half of maximum coil width.

SPECIFICATIONS

Model Number	Capacity In Tons	Dimensions In Inches											Weight (lbs.)
		Coil Width		Throat	Lifting Arm			Headroom H	Bail Dimensions			Thk. T	
		Max.	Min.		Length L	Depth D	Width W		Opening				
A	B	C											
82RC-5-36	5	36	24	24	30	5-5/16	4	37-1/4	1-1/2	4	7	1-1/4	550
82RC-5-48		48	30	24	39	6-1/8	4	38-1/16	1-1/2	4	7	1-1/4	707
82RC-5-60		60	36	24	48	6-15/16	4	38-15/16	1-1/2	4	7	1-1/4	853
82RC-7 1/2-36	7-1/2	36	24	24	30	5-5/8	4	37-1/2	1-1/2	4	7	1-1/2	750
82RC-7 1/2-48		48	30	24	39	6-3/8	4	38-1/4	1-1/2	4	7	1-1/2	996
82RC-7 1/2-60		60	36	24	48	6-15/16	4	39	1-1/2	4	7	1-1/2	1161
82RC-10-48	10	48	30	24	39	7-3/16	4	41-1/4	2	5	9	1-3/4	1200
82RC-10-60		60	36	24	48	7-5/8	4	41-1/2	2	5	9	1-3/4	1645
82RC-10-72		72	42	24	57	7-1/4	4	41-1/8	2	5	9	1-3/4	2100
82RC-15-48	15	48	30	30	39	7-1/4	4	47-7/8	2-1/4	5	9	1-3/4	2054
82RC-15-60		60	36	30	48	8	4	48	2-1/4	5	9	1-3/4	2410
82RC-15-72		72	42	30	57	8-3/4	4	48-3/4	2-1/4	5	9	1-3/4	2814
82RC-20-60	20	60	36	30	48	9-1/8	4	52-1/8	2-1/4	6	12	2	2864
82RC-20-72		72	42	30	57	9-3/4	4	52-1/2	2-1/4	6	12	2	2951
82RC-25-60	25	60	36	34	48	9	4	57-3/4	2-1/2	6	14	2-1/4	3077
82RC-25-72		72	42	34	57	9-3/4	4	58-3/4	2-1/2	6	14	2-1/4	3570
82RC-30-60	30	60	36	34	48	9-7/8	4	58-3/4	2-3/4	6	14	2-1/2	3480
82RC-30-72		72	42	34	57	10-5/8	4	59-3/8	2-3/4	6	14	2-1/2	4260
82RC-40-72	40	72	42	38	57	11	5	68	3-1/4	7	18	3	6100

Counter weight extends beyond arm one-half of the counter weight width, in capacities 25 ton and greater.

Other sizes available, consult factory.

Coil Lifters and Upenders



The Caldwell Group • 800-628-4263 Fax 815-229-5686
Strong-Bac® Section Master Catalog MC-607

Model 82LA - Slit Coil "C" Hook

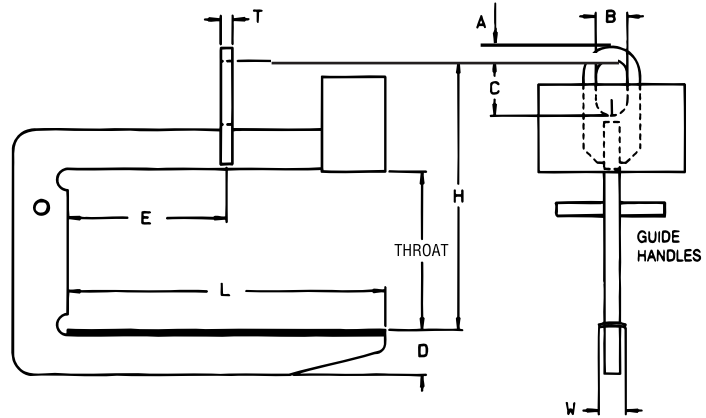
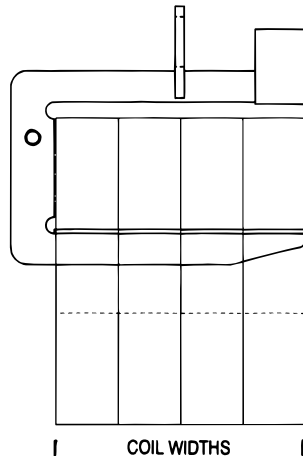


PRODUCT FEATURES:

- Designed for heavy duty applications.
- Handles multiple slit coils which maximize handling efficiency.
- Recessed counterweight minimizes interference with equipment or other obstacles.
- High tensile alloy steel plate reduces physical size and weight.
- Counterbalanced to hang level.
- Inside radius on hooks avoid coil edge contact.
- Curved coil saddle is standard.
- Guide handles for ease of coil positioning.
- Available with optional padding for additional coil protection.
- Designed and manufactured to ASME B30.20.



WARNING
Center of gravity must be centered under crane hook to prevent tilting of the lifter and load.



NOTE: "E" dimension equals one half of "L" dimension.

SPECIFICATIONS

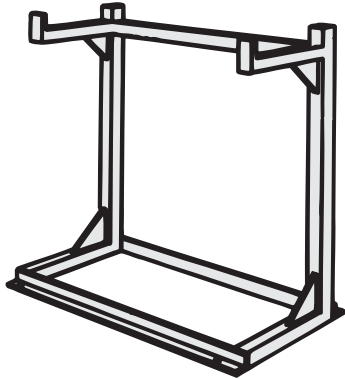
Model Number	Capacity. In Tons	Coil Width Max.	Throat	Dimensions In Inches								Weight (lbs.)
				Lifting Arm				Bail Dimensions				
				Length L	Depth D	Width W	Headroom H	Opening			Thk. T	
				A	B	C						
82LA-5-36	5	36	24	36	5-5/16	4	37-1/4	1-1/2	4	7	1-1/4	450
82LA-5-48		48	24	48	6-1/8	4	38	1-1/2	4	7	1-1/4	555
82LA-5-60		60	24	60	6-9/16	4	38-9/16	1-1/2	4	7	1-1/4	649
82LA-7 1/2-36	7-1/2	36	24	36	5-5/8	4	37-5/8	1-1/2	4	7	1-1/2	496
82LA-7 1/2-48		48	24	48	6-5/16	4	38-5/16	1-1/2	4	7	1-1/2	731
82LA-7 1/2-60		60	24	60	7-1/8	4	38-7/8	1-1/2	4	7	1-1/2	898
82LA-10-48	10	48	24	48	7-3/16	4	41-1/8	2	5	9	1-3/4	932
82LA-10-60		60	24	60	7-5/16	4	41-1/8	2	5	9	1-3/4	1281
82LA-10-72		72	24	72	7-1/4	4	41-1/8	2	5	9	1-3/4	1570
82LA-15-48	15	48	30	48	7-1/4	4	47-7/8	2-1/4	5	9	1-3/4	1510
82LA-15-60		60	30	60	8	4	48	2-1/4	5	9	1-3/4	1789
82LA-15-72		72	30	72	8-7/8	4	48-3/4	2-1/4	5	9	1-3/4	2120
82LA-20-60	20	60	30	60	9-1/8	4	52-1/8	2-3/4	6	12	2	2125
82LA-20-72		72	30	72	9-15/16	4	52-15/16	2-3/4	6	12	2	2485
82LA-25-60	25	60	34	60	9-1/8	4	57-3/4	3-1/4	6	14	2-1/2	2840
82LA-25-72		72	34	72	9-3/4	4	58-1/2	3-3/4	6	14	2-1/2	3350

Other sizes available, consult factory.

Coil Lifters and Upenders



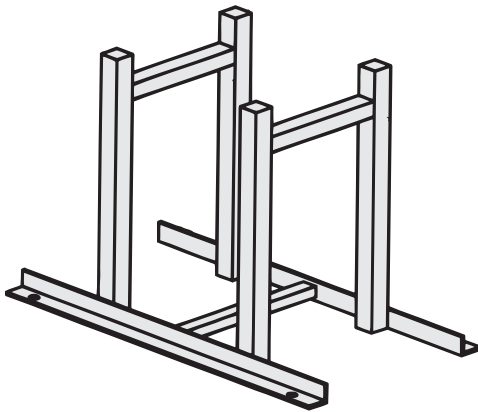
Parking Stands for Coil Hooks



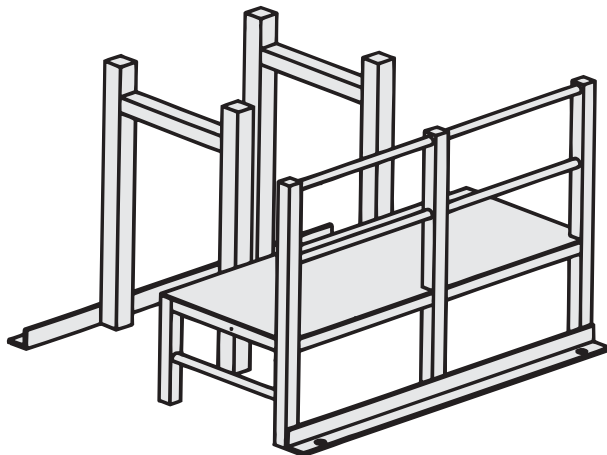
PRODUCT FEATURES:

- Individually designed for the size and capacity of your lifter to be stored.
- Heavy duty tubular construction.
- Minimizes lifter storage space requirements.
- Stabilizes lifter for personnel safety.
- Allows for easy access to lifter.
- Allows for easy inspection of lifter.
- Minimizes time required to engage lifter with crane hook.

Model PS-CH - Used to store all "C" Hook type lifters (Models: 82, 82LA, 82RC).



Model PS-TS - For storage of two sided coil lifters (Models: 84, 86, 85).



Model PS-M-TS - For storage and maintenance of two sided lifters. Personnel platforms provide ease of access to drive system for maintenance and inspection of motorized units.

Authorized Sales & Service

J. HERBERT CORPORATION

Call 1-800-255-0588

407-846-0588 Fax: 846-1066

info@jherbertcorp.com

Visit us online:

www.jherbertcorp.com