



**The NEW name in
Structural Mezzanines.**

www.vertispace.ws

GO Vertical
GO V VERTISPACE™

Authorized Sales & Service

J. HERBERT CORPORATION

Call 1-800-255-0588

407-846-0588 Fax: 846-1066

info@jherbertcorp.com

Visit us online:

www.jherbertcorp.com

Maximize Your Space

Worker productivity and manufacturing efficiencies are under constant scrutiny in today's business world. Whether you're an operations manager charged with expanding order fulfillment or a plant engineer seeking to increase capacity, adding an industrial mezzanine might be your answer.

Industrial mezzanines are the most cost-effective method to gain significant new production, storage or office space within an existing facility. Not only are mezzanines less expensive than new building construction, they're actually more convenient. Your new space is visible just a few steps up from your work area.

Using our regional manufacturing centers, the VertiSpace team of local sales consultants, professional engineers and trained craftspeople will design and build the ideal space for your facility. To get your project started, call your VertiSpace sales representative today at 1-800-742-4830. Our network of experienced and proven dealers and distributors will respond quickly and with individualized attention to your quotation requests.

Mezzanines are ideal for:

- Manufacturing facilities
- Increasing plant capacity
- Storage and warehousing
- Order fulfillment operations
- Distribution centers
- Equipment and process platforms
- Retail stores, offices and health clubs
- Auto dealerships and repair centers

Knorr Brake, Westminster, MD

"Because of the logistics of needs for storage and offices, the offices for the temporary consulting team needed to be integrated with our main operation... a mezzanine was the clear answer."

Forrest Shaw, Facilities Manager

Case New Holland, Cameron, MO
Regional parts distribution facility
51,000 sq. ft. widespan mezzanine



Maximize Your Value

VertiSpace offers “true” turnkey mezzanine solutions from design and fabrication through installation. Our regional steel fabricating centers are located throughout the country to expedite delivery and reduce shipping costs. This is a service no other manufacturer can match! With VertiSpace, you get:

Certified Designs

Every mezzanine is designed by experienced engineers. P.E. drawings and calculations can be furnished when required.

Superior Components and Craftsmanship

Hot rolled structural steel columns and beams, welded steel joists, durable decking options, OSHA and/or IBC approved stairs, railing and guards ensures your mezzanine is built to last. Installation is easy... everything arrives at the jobsite ready to erect. Our bolt-together design eliminates the need for on-site cutting, drilling, painting and welding.

Competitive Prices

Size has its advantages... with nearly 250,000 tons of annual capacity, our manufacturing efficiencies drive costs down... savings we pass on to you.



Bay State Pool Supplies

“...the VertiSpace design allowed us to choose the direction of our stairs during the installation process. That way, we could get a better sense of how the new process would flow and in the end our design was very effective.”

Diana Cunningham,
General Manager,
Springfield, VA



VertiSpace easily reaches customers from its four regional manufacturing centers. Total annual capacity nears 250,000 tons.

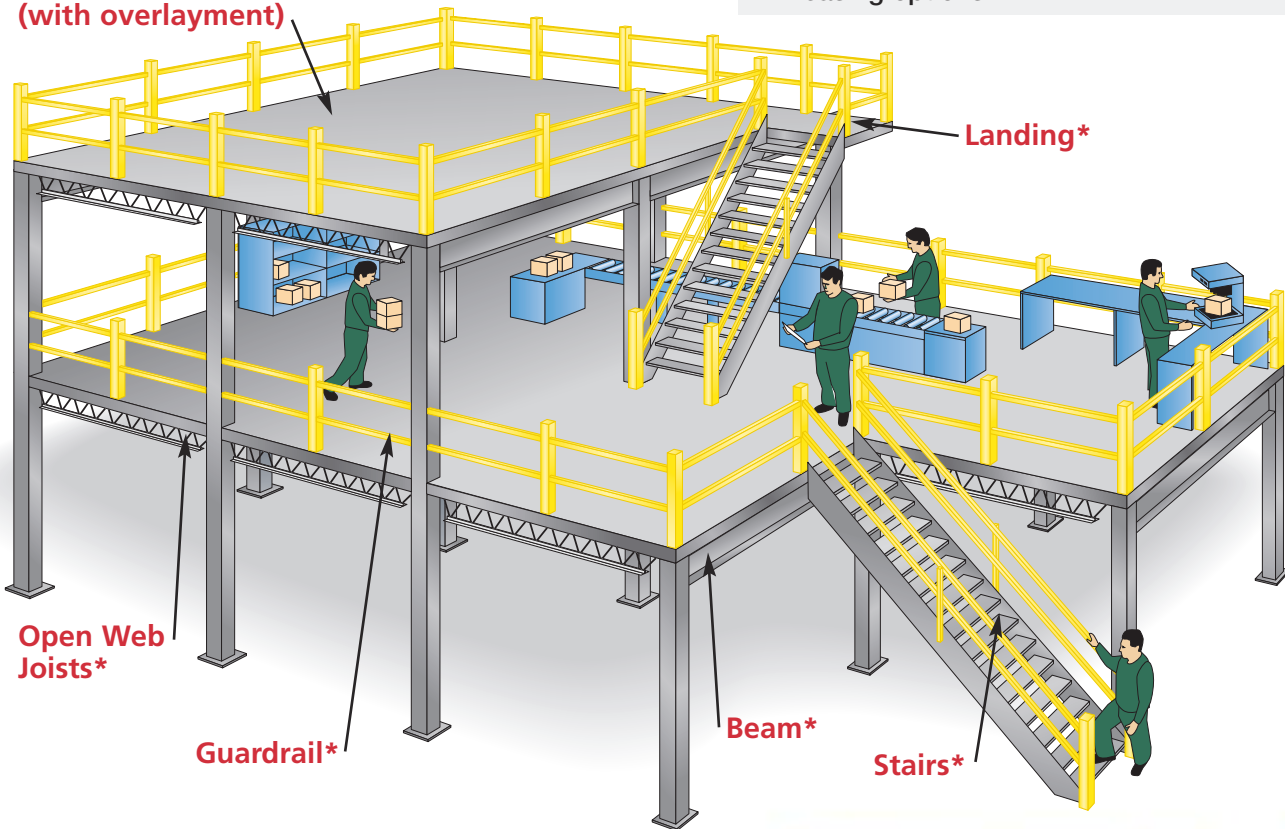
The Mezzanine Advantage

VertiSpace's mezzanines are freestanding structures with exceptional load capacities designed to minimize obstructions increasing workflow and clearance opportunities. Versatile deck options allow for an almost unlimited number of uses.

Advantages

- Double or triple your floor space without expensive building additions
- Use overhead space that is already lighted and heated
- Savings of up to 80% compared with the cost of new construction
- Designed around existing building constraints
- Quick installation – days not months
- Freestanding structures can be moved
- Potential tax benefits
- Leasing options

**B-Deck*
(with overlayment)**



* Designed and Manufactured by VertiSpace

World Gym, Setauket, NY

"The mezzanine overhead was installed for our cardio area, but beneath it the lower ceiling improved the lighting and gave a feeling of closeness to the users. For us, cost/economics was not the driver for the project. Comfort was, because it was more important to our membership to have a more intimate space."

Tom Jaklitsch, Owner



Design Flexibility

If you have ceilings 15 feet or above, your building is a candidate for a “space-making” mezzanine. Your VertiSpace authorized sales representative begins the process with a thorough on-site needs analysis. A project outline is formulated based on load requirements, work-flow, clearance factors, obstructions, opening, access points and stairways. Planning for additional racking, offices, conveyor systems, pick modules and other equipment are easily accommodated during this stage.

Our engineers design all systems to meet or exceed standards set by the AISC (American Institute for Steel Construction) and the SJI (Steel Joists Institute). Each project is then engineered to specific load and capacity requirements as well as the International Building Code (IBC).

VertiSpace’s bolt-together design allows for easy and fast erection and readily accommodates future expansions. All free-standing mezzanines can be dismantled and re-assembled in new locations.



Palram Industries, PA

“...to minimize the project’s total cost, we had to downsize the building. Incorporating the VertiSpace mezzanine was the most cost-effective solution and probably saved us \$300,000.”

**Christian Tittensor,
Zeppelin Systems,
System Integrator**



Structural Wide Span Mezzanine Design

VertiSpace mezzanines are built of structural steel columns and beams... a strong, cost-effective alternative to roll-formed steel. Structural components offer superior load bearing characteristics and allow for spans of 40 feet and more.

Open Web Bar Joist

This type of structure, our most common mezzanine, allows for long economical spans in the range of 20' x 25' columns at 125 lb/sq.ft. load.

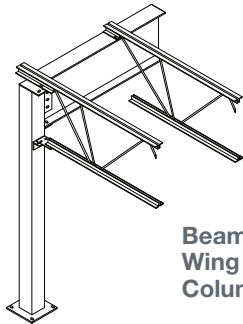
Beam to Beam

These structures, referred to as wide flange beam to wide flange beam, are for heavy-duty applications and are especially effective in work platforms. These systems carry loads of 250 lb/sq.ft. and up.

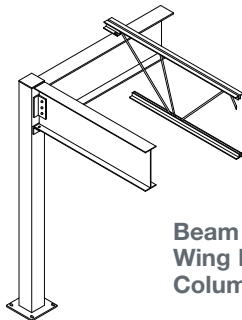
Standard design for deck deflection is $l/360$ of the span but can be increased or decreased based on your requirements.



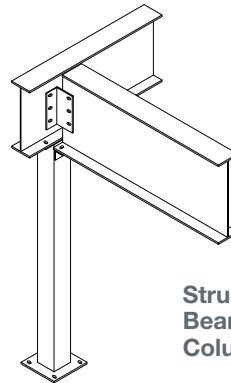
Structural Details:



Beam/Joist to
Wing Plated
Column



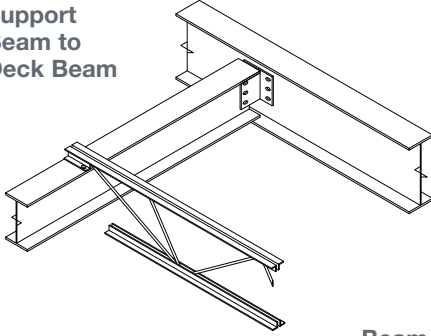
Beam to
Wing Plated
Column



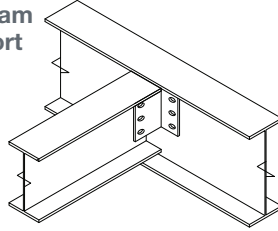
Structural
Beam to
Column



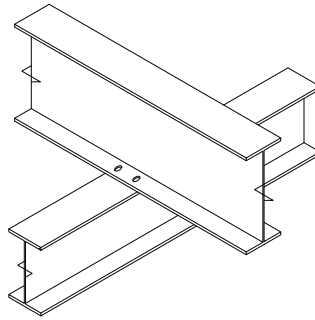
Support Beam to Deck Beam



Deck Beam to Support Beam



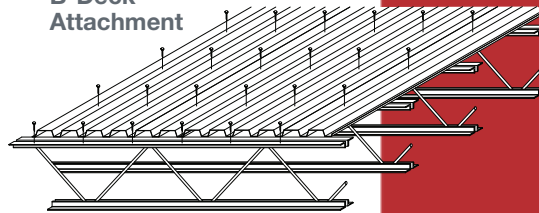
Beam over Beam



Decking

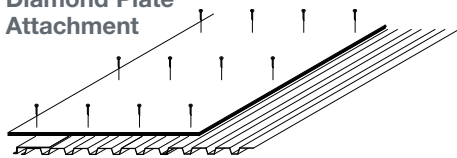
Many types and styles of decking are available for mezzanines based on the application. VertiSpace typically uses 20- or 18-gauge roll-formed B-Deck sub floor with a plywood surface. Other options include open bar grating, concrete and diamond or flat steel plate.

B-Deck Attachment

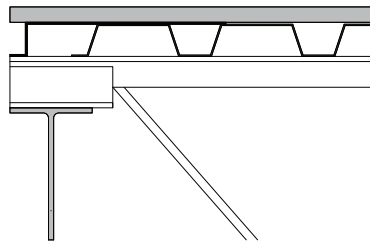


Decking Details

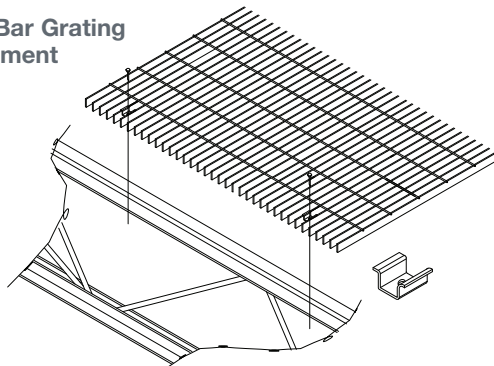
Plywood, Flat or Diamond Plate Attachment



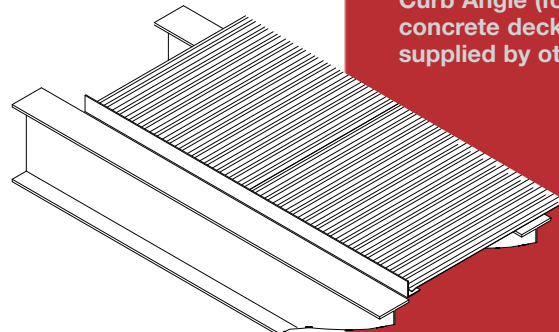
Decking Cross Section



Open Bar Grating Attachment



UFS Deck with Curb Angle (for concrete deck, supplied by others)



Gate and Drop Guards

Mezzanine gates help to safely transfer material and pallets on and off platforms. Choose from simple swing gates, sliding gates and security gates... all designed with safety and easy operation in mind. Gates are standard 5'9" feet wide and painted safety yellow to match the guardrail.

Swing Gate

Our simplest gate is available as a single or 5'9" ft. wide double gate (standard).

Sliding Gate

Sliding gates open and closed with minimal effort; however, they require a minimum of 14 linear feet to operate.

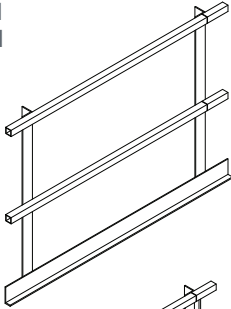
Security Safety Gate

These gates allow movement of pallets on and off mezzanines while providing maximum safety for workers, both on the mezzanine and on the floor below. The pallet load is captured within a structural steel safety corral which pivots back and forth between two different loading positions. Whether you are placing pallets onto the mezzanine with a lift truck, or unloading the pallet after it has been dropped on the deck, a safety guardrail is in place to protect your personnel.

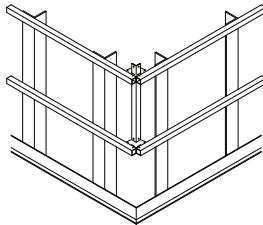
Pallet Drop Guards

Drop guards are used to protect the deck's surface from pallets at mezzanine gate locations. The drops are formed from steel diamond plate.

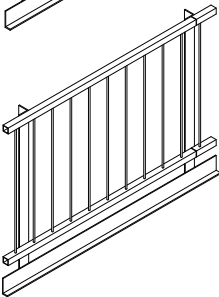
Standard Guardrail



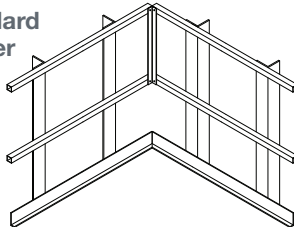
Reverse Corner



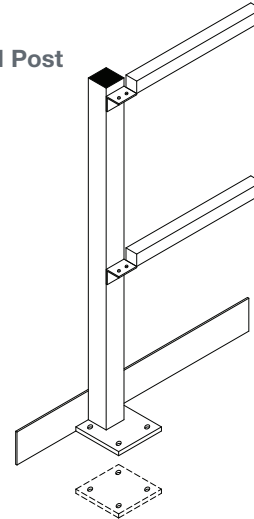
Vertical Baluster



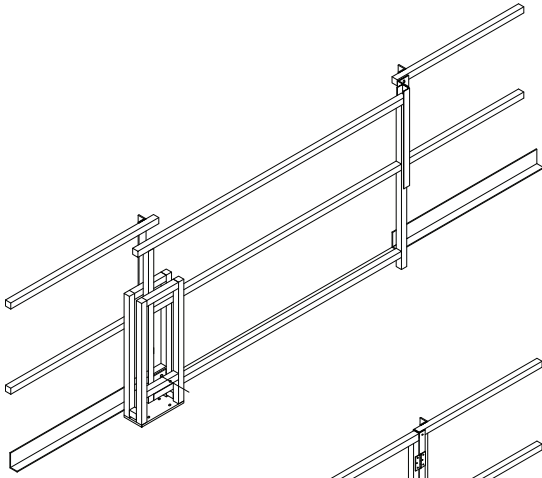
Standard Corner



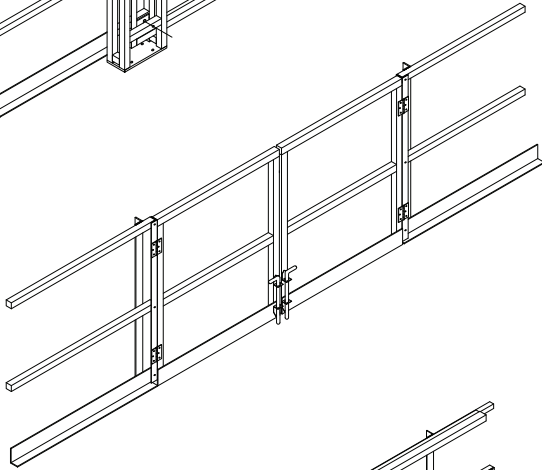
Deck Mounted Post



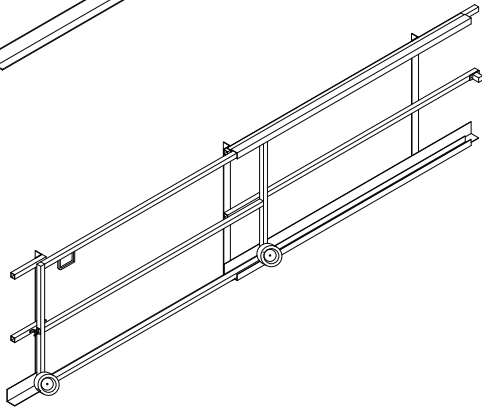
**Pivot Gate
Detail**



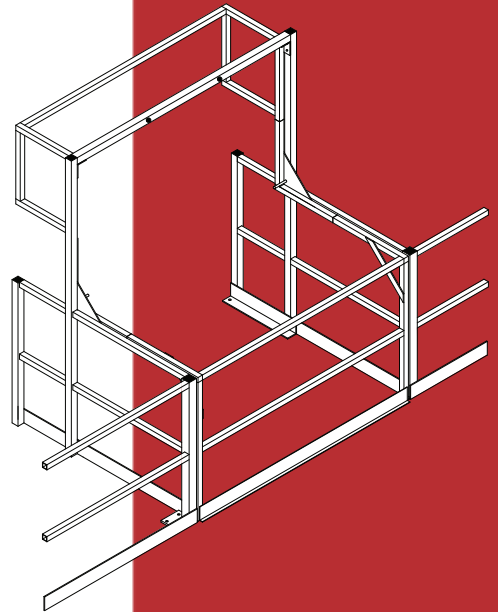
**Swing Gate
Detail**



**Sliding Gate
Detail**



**Safety Gate
Detail**

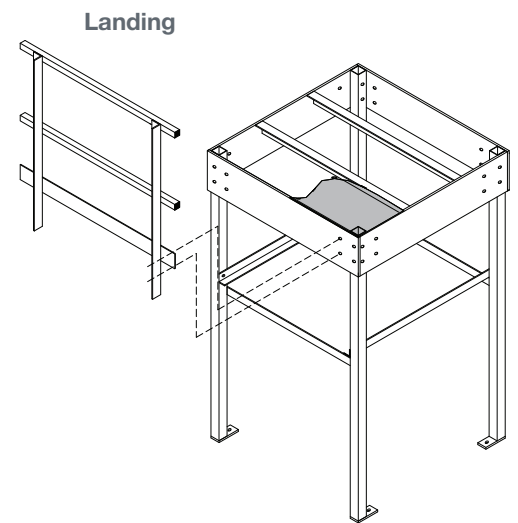
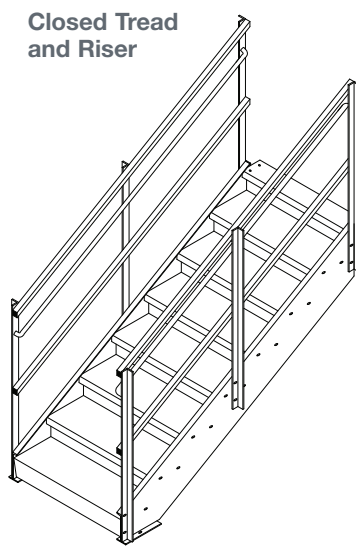
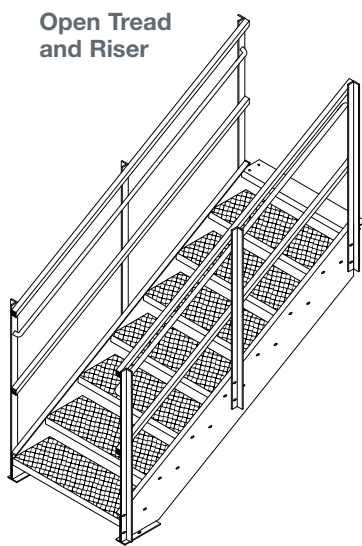


Stairs, Landings and Ladders

Stairs, landings and landings for mezzanines are fabricated and painted at the factory and shipped in a knock-down state for easy installation. A complete, factory welded assembly is also available. Intermediate landings are required for staircases when the deck height is more than 12 feet (IBC code requirement).

Top landings are provided when the stairs run parallel to the mezzanine. Landings are also used in “tight space” situations (U-shaped stair configuration) or when the stairs are required to turn corners.

Stair Details



LSP Automotive Services Union, S.C.
Assembly plant with three Mezzanines (Closed Tread and Riser)



IBC STAIR with 11" Deep Tread & 7" Max Riser



Deck Height	# of Risers	# of Treads	Horizontal Run
To 2'-4"	4	3	2'-11 7/8"
2'-4 1/8" to 2'-11"	5	4	3'-10 7/8"
2'-11 1/8" to 3'-6"	6	5	4'-9 7/8"
3'-6 1/8" to 4'-1"	7	6	5'-8 7/8"
4'-1 1/8" to 4'-8"	8	7	6'-7 7/8"
4'-8 1/8" to 5'-3"	9	8	7'-6 7/8"
5'-3 1/8" to 5'-10"	10	9	8'-5 7/8"
5'-10 1/8" to 6'-5"	11	10	9'-4 7/8"
6'-5 1/8" to 7'-0"	12	11	10'-3 7/8"
7'-0 1/8" to 7'-7"	13	12	11'-2 7/8"
7'-7 1/8" to 8'-2"	14	13	12'-1 7/8"
8'-2 1/8" to 8'-9"	15	14	13'-0 7/8"
8'-9 1/8" to 9'-4"	16	15	13'-11 7/8"
9'-4 1/8" to 9'-11"	17	16	14'-10 7/8"
9'-11 1/8" to 10'-6"	18	17	15'-9 7/8"
10'-6 1/8" to 11'-1"	19	18	16'-8 7/8"
11'-1 1/8" to 11'-8"	20	19	17'-7 7/8"
11'-8 1/8" to 12'-0"	21	20	18'-6 7/8"

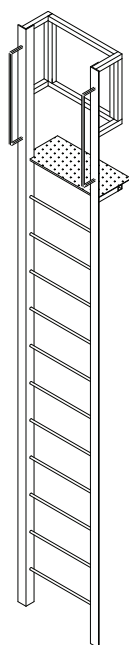
OSHA STAIR with 9 3/4" Deep Tread & 9" Max Riser

Deck Height	# of Risers	# of Treads	Horizontal Run
To 2'-3"	3	2	1'-9 7/8"
2'-3 1/8" to 3'-0"	4	3	2'-8 1/8"
3'-0 1/8" to 3'-9"	5	4	3'-5 7/8"
3'-9 1/8" to 4'-6"	6	5	4'-3 5/8"
4'-6 1/8" to 5'-3"	7	6	5'-1 3/8"
5'-3 1/8" to 6'-0"	8	7	5'-11 1/8"
6'-0 1/8" to 6'-9"	9	8	6'-8 7/8"
6'-9 1/8" to 7'-6"	10	9	7'-6 5/8"
7'-6 1/8" to 8'-3"	11	10	8'-4 3/8"
8'-3 1/8" to 9'-0"	12	11	9'-2 1/8"
9'-0 1/8" to 9'-9"	13	12	9'-11 7/8"
9'-9 1/8" to 10'-6"	14	13	10'-9 5/8"
10'-6 1/8" to 11'-3"	15	14	11'-7 3/8"
11'-3 1/8" to 12'-0"	16	15	12'-5 1/8"

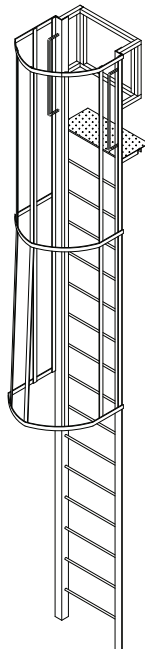
Note: All stairs over 12'-0" require an Intermediate Landing

Ladders

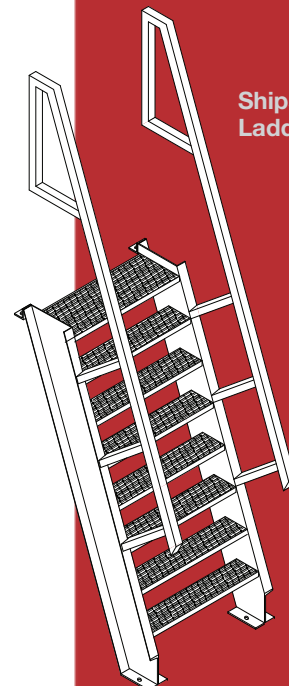
Fabricated and painted at the factory, VertiSpace offers custom vertical ladders with or without a safety cage, painted safety yellow and can be for indoor or outdoor use. We also offer ship style ladders



Vertical Ladder



Vertical Ladder with Cage



Ships Ladder



**VertiSpace
Corporate Office**

595 Bethlehem Pike, Suite 222
Montgomeryville, PA 18936
Telephone: (215) 996-9088
Toll-free: 1-800-742-4830
Fax: (215) 996-0998

Manufacturing locations:

East Coast
4010 Clay Street
Point of Rocks, MD

Mid West
2000 West Main Street
Washington, MO

West Coast
2002 Morgan Road
Sunnyside, WA

South
140 South Ellis Road
Jacksonville, FL

www.vertispace.ws



Authorized Sales & Service
J. HERBERT CORPORATION
Call 1-800-255-0588
407-846-0588 Fax: 846-1066
info@jherbertcorp.com

Visit us online:
www.jherbertcorp.com

