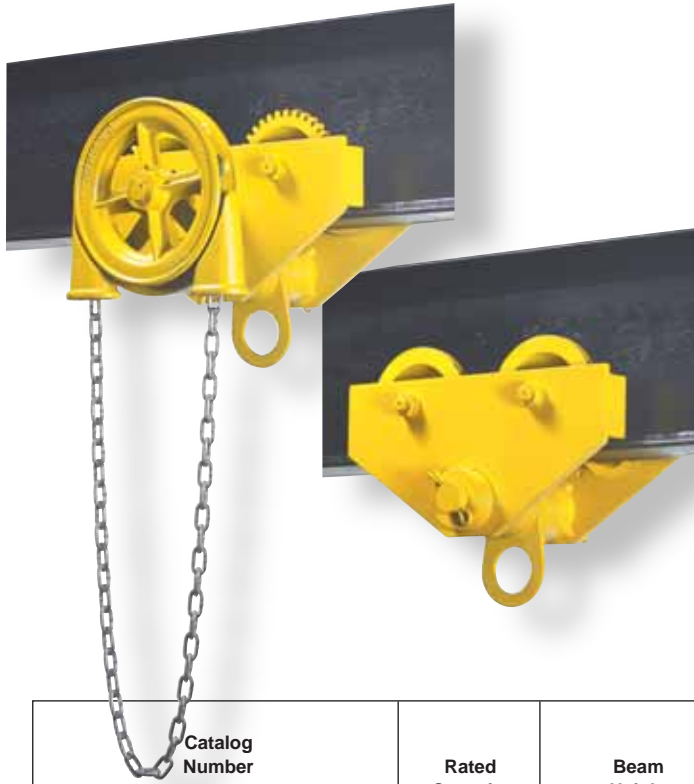




Authorized Sales & Service
J. HERBERT CORPORATION
 Call 1-800-255-0588
 407-846-0588 Fax: 846-1066
 info@jherbertcorp.com
 Visit us online:
 www.jherbertcorp.com

AMERICA'S FIRST NAME IN INDUSTRIAL LIFTING

HAND PROPELLED OVERHEAD I-BEAM TROLLEYS



1/4 through 12 ton capacity trolleys have universal design with dual tread wheels for standard and wide flange beams, and are adjustable to fit most standard flange widths.

1/4 through 3 ton trolleys feature lifetime lubricated precision ball bearings.

In the 4 ton through 25 ton capacities, each trolley is equipped with eight duo-sealed Timken tapered roller bearings that absorb the radial and thrust loads exerted in these higher capacities, and reduce manual effort and maintenance to a minimum.

Heavy rolled steel side plates are shaped to give these trolleys stability and rigidity. They extend beyond the wheels to act as bumpers. Steel equalizing pins connect the two halves of each trolley, providing load equalization and smooth operation. All units are equipped with drop stops.

Trolley wheels are long wearing alloy cast iron. Wheel treads are machined to provide the smoothest possible rolling motion. Steel axles are rigidly supported in the side frame. Steel trolley blocks reinforce the side plates as well as the equalizing pin.

Catalog Number		Rated Capacity In Tons	Beam Height Inches	Minimum Flange Width Inches	Smallest Radius Curve Inches	Approx. Net Weight, Lbs.	
Plain Trolley	Geared Trolley					Plain Trolley	† Geared Trolley
1641-0025	1642-0025	1/4	4 - 12	2.66 - 5.00	20	23	38
1641-0050	1642-0050	1/2	4 - 12	2.66 - 5.00	20	23	38
1641-0100	1642-0100	1	5 - 12	3.00 - 6.00	24	43	62
1641-0150	1642-0150	1 1/2	5 - 12	3.00 - 6.00	24	45	65
1641-0200	1642-0200	2	6 - 18	3.33 - 6.25	30	67	90
1641-0300	1642-0300	3	6 - 18	3.33 - 6.00	30	70	93
1641-0400	1642-0400	4	8 - 24	4.00 - 7.00	36	155	184
1641-0500	1642-0500	5	8 - 24	4.00 - 7.00	36	160	188
1641-0600	1642-0600	6	8 - 24	4.00 - 7.00	36	160	188
1641-0800	1642-0800	8	10 - 24	4.62 - 8.00	60	300	347
1641-1000	1642-1000	10	10 - 24	4.62 - 8.00	60	310	360
1641-1200	1642-1200	12	10 - 24	4.62 - 8.00	60	310	360
1631-1600	1632-1600	16	18 - 24	6.00 - 8.00	96	800	895
1631-2000	1632-2000	20	18 - 24	6.00 - 8.00	96	845	955
1631-2500	1632-2500	25	18 - 24	6.00 - 8.00	120	1045	1200

30, 40, 50 Ton trolleys are available as tandem Construction - Consult factory.

NOTE: For wide flange beam adaptation, patented track or for beams larger than standard - consult factory.

Specify curve on order. Wheels are modified to negotiate curves.

8 Ft. standard hand chain drop on geared trolley.

† Weight less hand chain.



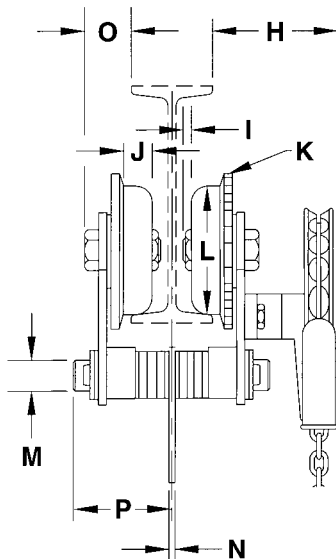
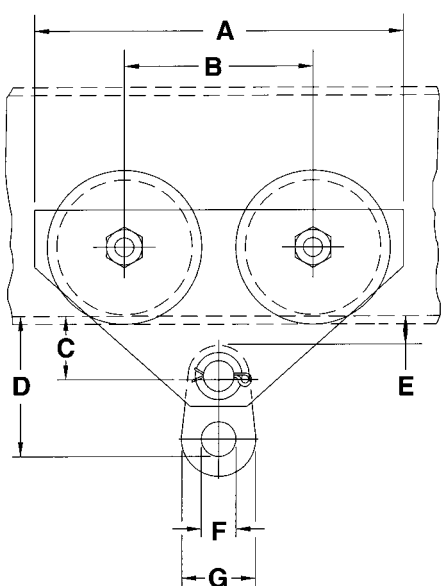
414 West Broadway Ave.
 P.O. Box 769
 Muskegon, MI 49443
 Ph: 866-805-2962
 Fx: 800-742-9270



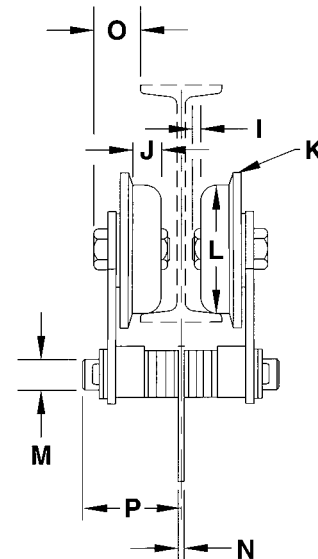
CLEARANCE DIMENSIONS

All dimensions are in inches

FULLY SEALED PRECISION BEARING TROLLEYS MACHINED WHEEL TREADS



GEARED



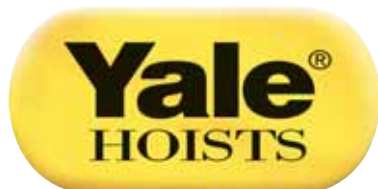
PLAIN

Cap. (Tons)	A	B	C	D	E	F	G	H	I	J	K	L	M	N	O	P
1/4	11 1/2	6	1 7/8	4 7/8	7/8	1 3/4	2 3/4	6	—	7/8	4	2 7/8	1	1/4	2	4 1/8
1/2	11 1/2	6	1 7/8	4 7/8	7/8	1 3/4	2 3/4	6	—	7/8	4	2 7/8	1	1/4	2	4 1/8
1	13 1/4	6 3/4	2 1/4	5 3/8	1	1 3/4	3	6 1/8	—	1 1/8	5	3 3/4	1 1/4	1/4	13/4	4 3/4
1 1/2	13 1/4	6 3/4	2 1/4	5 3/8	1	2	3 1/4	6 1/8	—	1 1/8	5	3 3/4	1 1/4	3/8	13/4	4 3/4
2	15 5/8	7 5/8	2 5/8	6 3/4	1 1/8	2 1/8	3 5/8	6 1/8	—	1 1/8	6	4 1/2	1 1/2	3/8	2 1/8	5 1/4
3	15 5/8	7 5/8	2 5/8	6 7/8	1 1/8	2 1/4	4	6 1/8	—	1 1/8	6	4 1/2	1 1/2	1/2	2 1/8	5 1/4
4	18 3/4	8 1/2	3 1/4	8 3/8	1 1/4	2 3/4	4 3/4	8 1/8	1/8	1 3/8	8	6 3/8	2	5/8	2 5/8	6 1/8
5	18 3/4	8 1/2	3 1/4	8 5/8	1 1/4	3	5 1/2	8 1/8	1/8	1 3/8	8	6 3/8	2	5/8	2 5/8	6 1/8
6	18 3/4	8 1/2	3 1/4	8 5/8	1 1/4	3	5 1/2	8 1/8	1/8	1 3/8	8	6 3/8	2	5/8	2 5/8	6 1/8
8	23 5/8	10 5/8	3 7/8	10 5/8	1 3/8	3 1/2	6 1/2	9	1/8	1 11/16	10	8 1/4	2 1/2	3/4	3 1/4	6 7/8
10	23 5/8	10 5/8	3 7/8	11 1/8	1 3/8	4 1/2	8	9	1/8	1 11/16	10	8 1/4	2 1/2	1	3 1/4	6 7/8
12	23 5/8	10 5/8	3 7/8	11 1/8	1 3/8	4 1/2	8	9	1/8	1 11/16	10	8 1/4	2 1/2	1	3 1/4	6 7/8
16	28 1/4	14	5 7/8	15 1/4	2 1/2	4	9	14 1/2	5/16	2	13 1/2	11 3/4	3 1/4	1 1/2	7	8
20	28 1/4	14	5 7/8	16 5/8	2 1/2	4	10	14 1/2	5/16	2	13 1/2	11 3/4	3 1/4	1 3/4	7	8 1/4
25	28 1/4	14	5 7/8	16 3/4	2 1/8	4	10	14 1/2	5/16	2	13 1/2	11 3/4	3 1/4	1 3/4	7	8 1/4

NOTE: 30, 40 & 50 ton dimensions furnished on application.

16 - 25 ton units are supplied with canted side plates for operation on standard American I-Beams - consult factory for other beams.

All dimensions are in inches.



414 West Broadway Ave.
P.O. Box 769
Muskegon, MI 49443
Ph: 866-805-2962
Fx: 800-742-9270

WARNING

Overloading and improper use can result in injury.

To avoid injury:

- Do not exceed working load limit, load rating or capacity.
- Do not use to lift people or loads over people.
- Use only alloy chain and attachments for overhead lifting.
- Read and follow all instructions.
- This equipment for manual operation only.