

## MOTOR-DRIVEN TROLLEYS *(For use only with lug-suspended hoists)*

Yale motor-driven trolleys are designed to operate with Yale lug mounted hoists...attaching directly to the hoist suspension lug, forming an integral hoist/trolley combination. Motor-driven trolleys are ideal for heavier duty cycles or applications with heavier capacities and longer lifts and applications where the operator can not touch or be near the load.

Motor-driven trolleys are offered in capacities from 1/4 to 3 tons to cover the entire range of Yale electric chain hoists. The trolleys are provided with a four button pendant station as standard for controlling the hoist and trolley motions. The pendant station uses control voltage from the hoist control.



### *Some of the superior construction features of the Yale Motor-driven trolleys are:*

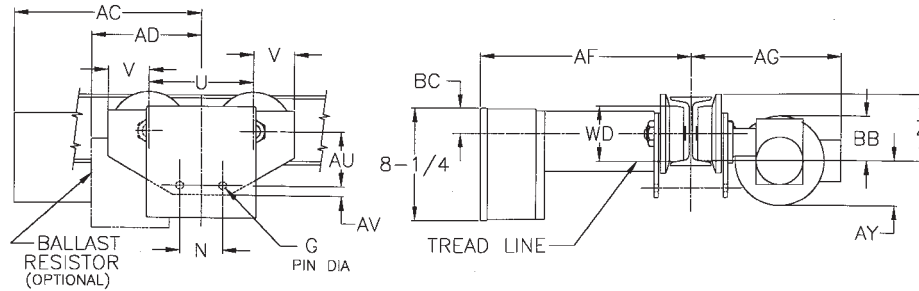
- Steel frame side plates extend beyond the wheels for end stop contact. Side plates have tapped holes for collector bracket attachment.
- Wheels are forged heat-treated steel with contour tread for use on American Standard I-Beams or wide flange beams.
- Traverse motor is 30-minute rated, totally enclosed non-ventilated with class "F" insulation and TAS as standard.
- Traverse gearing is housed in a heavy duty right angle drive reducer with output pinion meshing with machine cut wheel gears.
- Trolley controls are housed in a NEMA 1 enclosure mounted on the trolley side for easy access. The controls include a reversing contactor, terminal strip and NEMA 4X pendant station with hoist and trolley push-button controls as standard.

## SIZES, CATALOG NUMBERS & SPECIFICATIONS MOTOR-DRIVEN TROLLEY FOR USE WITH SINGLE OR TWO SPEED HOISTS

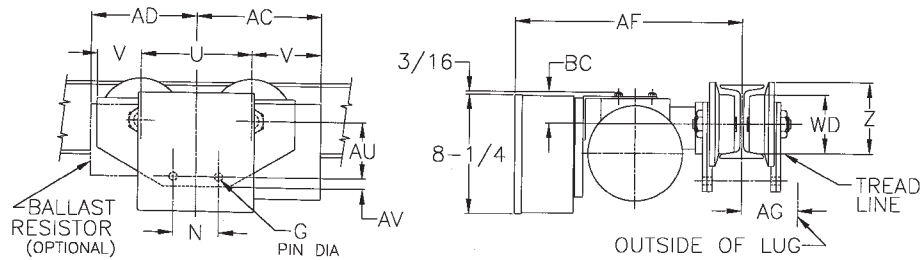
Catalog Number	Net Wt.	Std. Width Adjustment	Extended Adjustments with price added to std.		Trolley Speed	Optional Standard Speeds (fpm)	Special Speed (fpm)	Motor H.P.
			1st Ext. Flange Adj.	2nd Ext. Flange Adj.				
<b>1/4 to 1 Ton Capacity</b>								
MDT01	85#	3 <sup>3</sup> / <sub>8</sub> " - 5"	5 <sup>1</sup> / <sub>8</sub> " - 7 <sup>1</sup> / <sub>4</sub> "	7 <sup>1</sup> / <sub>2</sub> " - 9 <sup>1</sup> / <sub>8</sub> "	75 fpm	50 & 100	25, 150	1/4
<b>2 Ton Capacity</b>								
MDT02	95#	3 <sup>5</sup> / <sub>8</sub> " - 6"	6 <sup>1</sup> / <sub>4</sub> " - 8 <sup>5</sup> / <sub>8</sub> "	8 <sup>7</sup> / <sub>8</sub> " - 11 <sup>1</sup> / <sub>4</sub> "	60 fpm	40 & 80	30, 120	1/4
<b>3 Ton Capacity</b>								
MDT03	140#	4" - 6 <sup>1</sup> / <sub>4</sub> "	6 <sup>3</sup> / <sub>8</sub> " - 8 <sup>5</sup> / <sub>8</sub> "	8 <sup>3</sup> / <sub>4</sub> " - 11"	50 fpm	75 & 100	25, 125	1/4

Always specify voltage when ordering. Voltages available: 115/230-1-60, 208-230/460-3-60, 575-3-60  
 115/230-1-60 is not available on trolleys for two speed hoists or two speed trolleys.  
 Two speed trolleys have a 3:1 speed ratio. Standard pendant drop from trolley is 7 feet. Longer cables are available.  
 Trolleys are equipped with 3-foot length power supply cable. Longer lengths are available.

## HEAVY DUTY RIGID MOUNT TROLLEYS



1/4 - 1 Ton & 2 Ton Trolley



3 Ton Trolley

## OUTLINE DIMENSIONS

Dimensions	1/4 thru 1 Ton Capacity	2 Ton Capacity	3 Ton Capacity
AC	12"	12"	13 <sup>1</sup> / <sub>2</sub> "
AD	8 <sup>3</sup> / <sub>16</sub> "	8 <sup>3</sup> / <sub>16</sub> "	8 <sup>3</sup> / <sub>16</sub> "
AF Max.	16 <sup>7</sup> / <sub>8</sub> "	16 <sup>7</sup> / <sub>8</sub> "	16 <sup>13</sup> / <sub>16</sub> "
AG Max.	12 <sup>1</sup> / <sub>2</sub> "	12 <sup>1</sup> / <sub>2</sub> "	5 <sup>7</sup> / <sub>8</sub> "
AU	3 <sup>7</sup> / <sub>8</sub> "	4 <sup>1</sup> / <sub>8</sub> "	4 <sup>1</sup> / <sub>2</sub> "
AV	3/4"	1 <sup>15</sup> / <sub>16</sub> "	1 <sup>3</sup> / <sub>8</sub> "
AY	2 <sup>9</sup> / <sub>16</sub> "	1 <sup>15</sup> / <sub>16</sub> "	—
BB Max.	3 <sup>1</sup> / <sub>8</sub> "	2 <sup>1</sup> / <sub>16</sub> "	—
BC	1 <sup>13</sup> / <sub>16</sub> "	2 <sup>7</sup> / <sub>16</sub> "	2 <sup>1</sup> / <sub>8</sub> "
G Dia.	5/8"	1"	1 <sup>1</sup> / <sub>4</sub> "
N	3 <sup>1</sup> / <sub>8</sub> "	5"	6"
U	7 <sup>3</sup> / <sub>4</sub> "	9 <sup>1</sup> / <sub>8</sub> "	9 <sup>1</sup> / <sub>8</sub> "
V	3"	3"	3 <sup>1</sup> / <sub>4</sub> "
Z	4 <sup>7</sup> / <sub>8</sub> "	4 <sup>7</sup> / <sub>8</sub> "	4 <sup>7</sup> / <sub>8</sub> "
WD	4"	4"	4"
Min. Radius	3'	4'	4'
Standard Flange Width Adjust.	3" - 5"	3 <sup>5</sup> / <sub>8</sub> " - 6"	4" - 6 <sup>1</sup> / <sub>4</sub> "

If using a NEMA 4/12 panel, consult factory for dimensions due to add-on of counterweights.