

- Rim gripping core vertical coil grabs for all applications
- Designed for safety and ease of use
- Available in any required load capacity

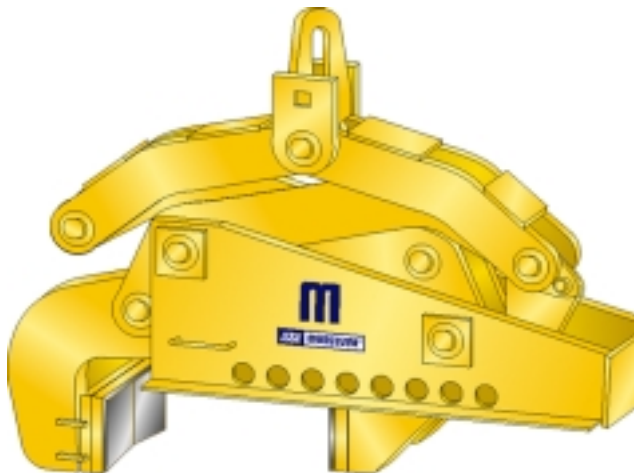
G1616 Coil Grabs

G1616 RIM GRIPPING COIL GRABS

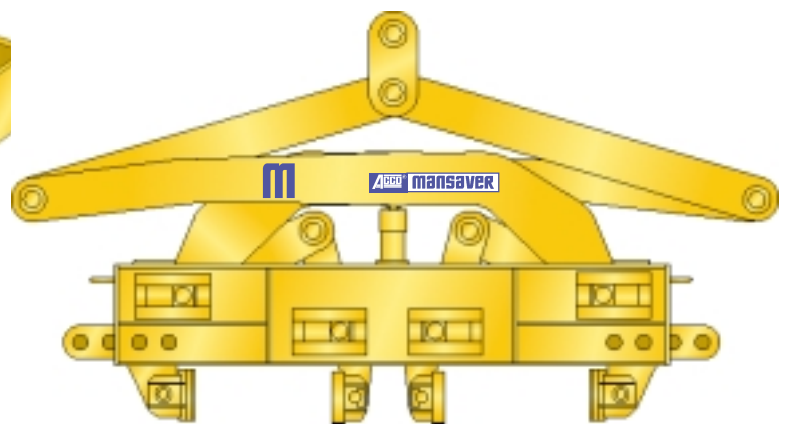
Mansaver® offers G1616 mechanical rim gripping core vertical coil grabs in both standard configurations or special designs to meet the requirements of your lifting applications.

Rim gripping coil grabs handle a wide range of coil sizes, minimize coil damage and have the advantage of being fully mechanical, requiring no external power. This family of grabs includes adjustable single rim models ideal for handling narrower coils, heavy single rim models for loads up to 100,000 pounds, and adjustable double rim gripping models ideal for special finish and light gauge large diameter coils. All of these grabs are equipped with mechanical latches providing automatic hold-open and grip-release cycling.

All ACCO lifters conform to ASME B30.20 standards for below-the-hook lifters. Standard paint is ACCO safety yellow machine enamel.



- Adjustable, single rim gripping grab
- Plate type bail



- Adjustable, double rim gripping grab
- Replaceable pin style bail

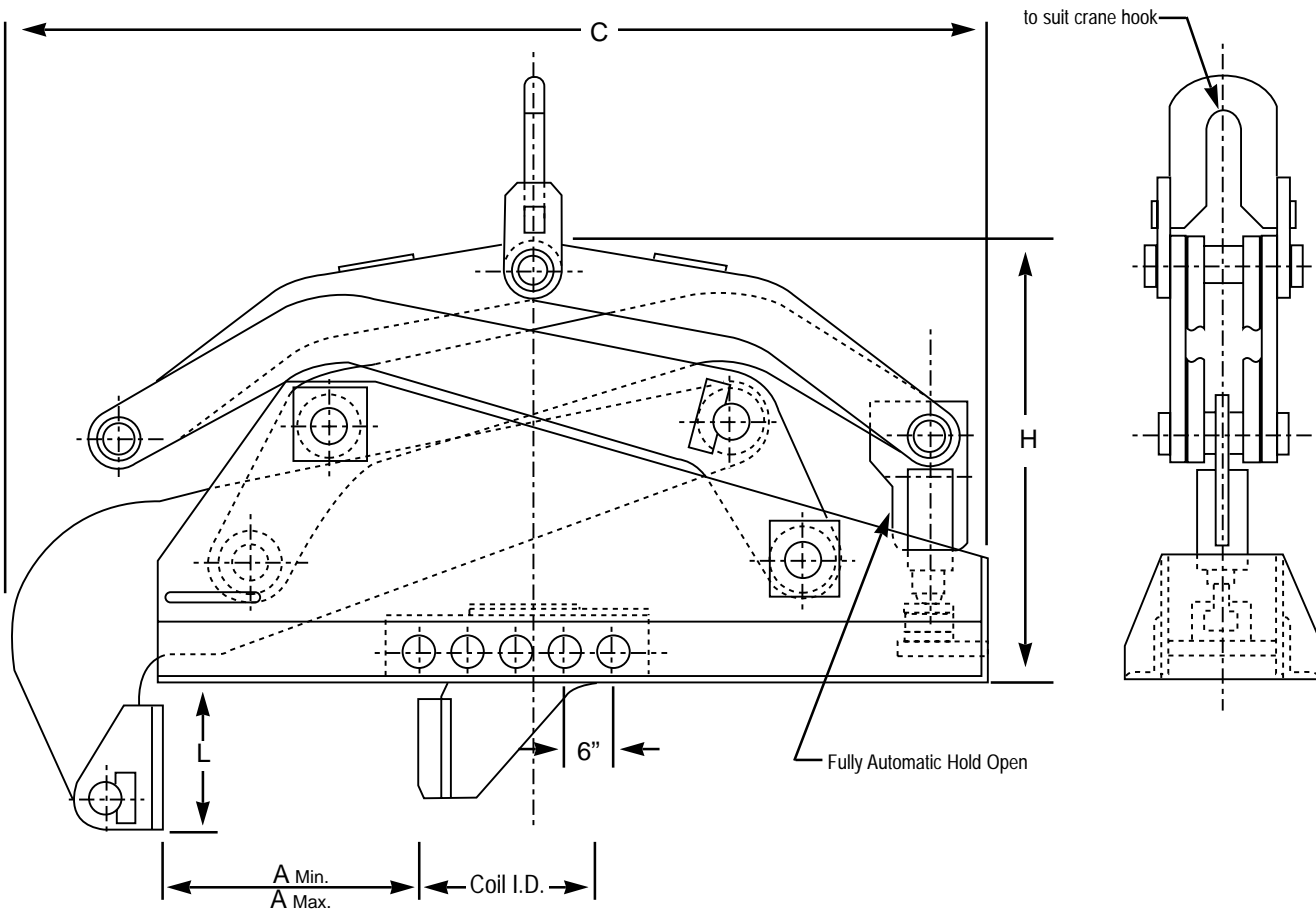
Authorized Sales & Service
J. HERBERT CORPORATION
Call 1-800-255-0588
407-846-0588 Fax: 846-1066
info@jherbertcorp.com

Visit us online:
www.jherbertcorp.com

Adjustable Single Rim Gripping Vertical Coil Lifters

Capacity in lbs.	Coil Wall		Leg Depth L	Length C	Height		Est. wt. lbs.
	Min. A	Max. A			Min. H	Max. H	
	5,000	2	20	9	60	25	
10,000	3	20	10-1/2	72	0	88	1,800
15,000	6	22	11-1/2	80	34	88	2,700
20,000	6	22	11-1/2	84	35	90	3,000
25,000	6	24	11-1/2	84	35	100	3,300
30,000	6	24	11-1/2	97	37	120	3,800

All dimensions shown are in inches and are approximate.



mansaver[®]

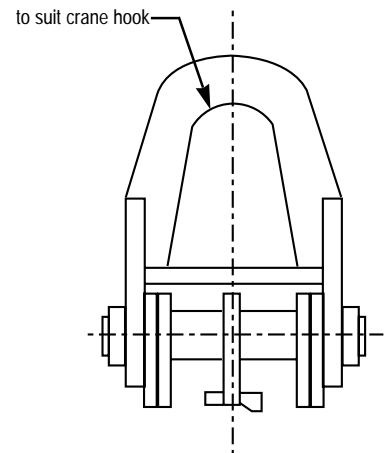
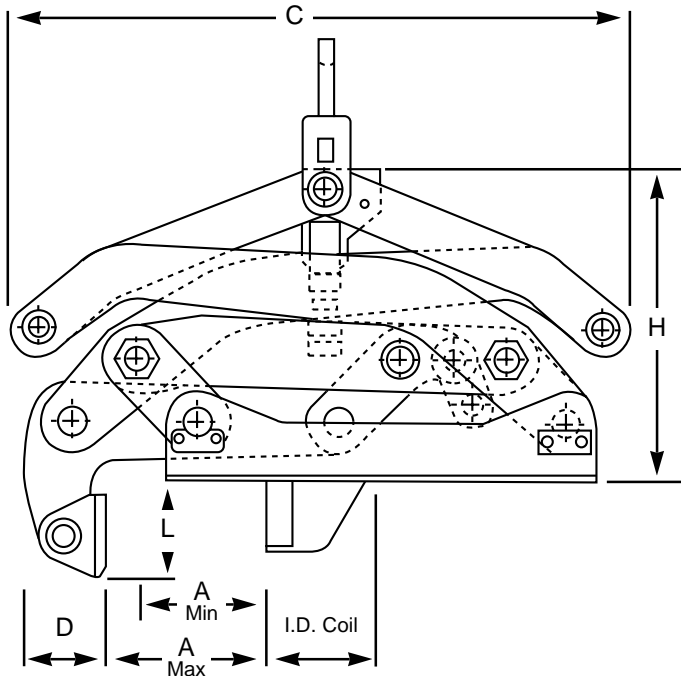
"The Lifting Power You Need."

G1616 Coil Grabs

Automatic Single Rim Gripping Coil Lifters

Capacity in lbs.	Coil		Outer Leg		Length C	Height		Est. Weight lbs.
	Min. A	Max. A	Depth L	Width D		Min. H	Max. H	
10,000	3	18	11	9-1/2	70	38	104	2,500
15,000	3	18	17	11	104	42	120	4,200
20,000	6	21	17	14	104	42	132	5,000
25,000	6	21	17	16	104	42	132	5,600
40,000	6	30	22	17-1/2	116	64	142	8,000
60,000	6	30	23-1/2	21	116	68	168	12,000
80,000	6	33	23-1/2	22	116	68	200	18,000
100,000	6	33	23-1/2	22	121	68	200	25,000

All dimensions shown are in inches and are approximate.



Authorized Sales & Service
J. HERBERT CORPORATION
Call 1-800-255-0588
407-846-0588 Fax: 846-1066
info@jherbertcorp.com

Visit us online:
www.jherbertcorp.com

ABCO[®] 4.4.3

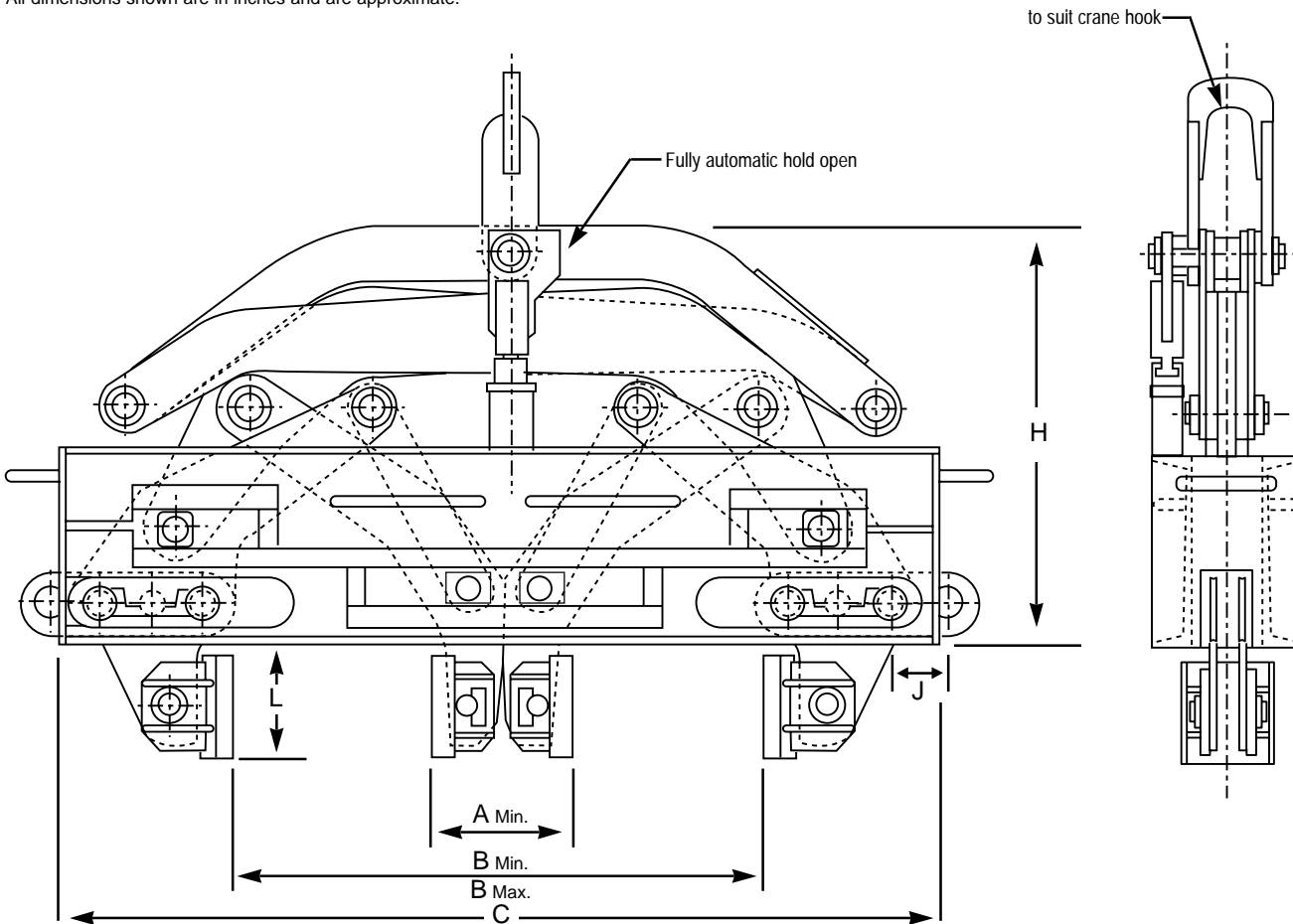
mansaver[®]*"The Lifting Power You Need."*

G1616 Coil Grabs

Adjustable Double Rim Gripping Vertical Coil Lifters

Capacity in lbs.	I.D. Min. A	Coil O.D.		Leg		Length C	Height		Est. Weight lbs.
		Min. B	Max. B	Adj. J	Depth L		Min. H	Max. H	
2,000	10	20	51	2	6	85	29	48	1,000
4,000	10	20	51	2	6	85	29	48	1,100
6,000	13	22	51	3	9	85	32	56	1,800
8,000	13	22	51	6	9	88	35	71	2,000
10,000	13	22	51	6	9	88	35	73	2,500
12,000	16	30	51	4	15	96	35	73	3,200
15,000	16	30	51	4	15	96	35	89	4,000

All dimensions shown are in inches and are approximate.

**4.4.4** **ACCO**[®]

Authorized Sales & Service
J. HERBERT CORPORATION
 Call 1-800-255-0588
 407-846-0588 Fax: 846-1066
 info@jherbertcorp.com

Visit us online:
www.jherbertcorp.com

© 2000 FKI Industries Inc. 6991-0018 JGD 2M 0600 Printed in U.S.A.



G1616 Coil Grabs

Selection Guide

All Mansaver® G1616 rim gripping coil grabs are designed to perform specific lifting tasks in conjunction with other lifting equipment. The grab examples and standard model descriptions

on the preceding pages are intended to assist in determining what grab is best suited to your lifting task. Please supply available application information below and submit to the

Mansaver® sales department for pricing and further assistance in equipment choice.

All ACCO MANSAYER® Products meet or exceed ANSI B.30.20* for "Below The Hook" lifting devices.

All ACCO MANSAYER® Products have a one year warranty on workmanship and materials.**

* Please refer to ANSI Standards B.30.20 and B.30.9 for all lifting applications and guidelines.

** Consult the factory for further details.

LOAD INFORMATION:

Load description (steel, aluminum, or other coils): _____

I.D. range: _____

O.D. range: _____

Face width range: _____

Maximum load weight: _____

GRAB INFORMATION:

Required grab capacity: _____

Capacity of the hoist the grab will used with: _____

Lifter type (single or double rim): _____

Lifter suspension (pin or plate bail, other): _____

Options (special paint, special grip facings, other): _____

Lifting Hoist Hook Information on reverse side

Clear Form

Authorized Sales & Service
J. HERBERT CORPORATION
Call 1-800-255-0588
407-846-0588 Fax: 846-1066
info@jherbertcorp.com
Visit us online:
www.jherbertcorp.com

ACCO® 4.4.5

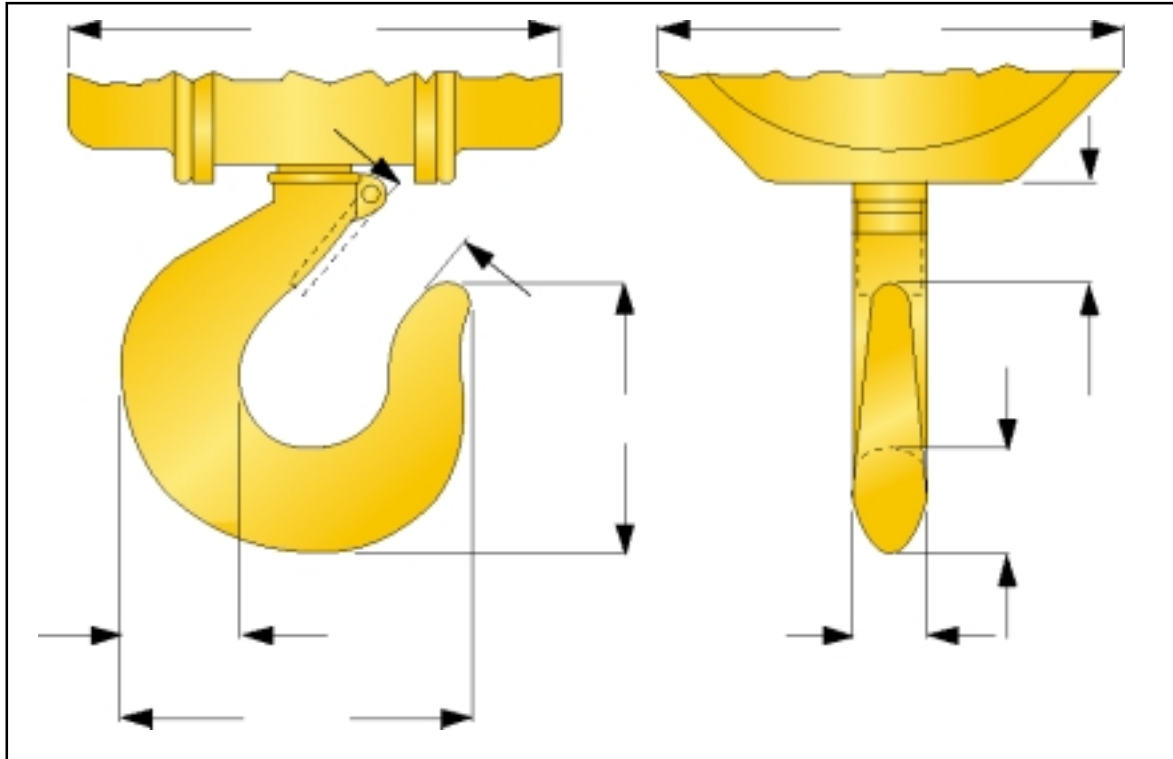
mansaver[®]

"The Lifting Power You Need."

G1616 Coil Grabs

Lifting Hoist Hook Information

(Please Fill Out Completely)



Acco[®] Acco Chain & Lifting Products Division

76 Acco Drive, Box 792, York, PA 17405
Telephone 800-967-7333 Fax 800-715-8897
www.accolifting.com

PART OF THE **FKI** GROUP OF COMPANIES

Acco[®] 4.4.6

Authorized Sales & Service

J. HERBERT CORPORATION

Call 1-800-255-0588
407-846-0588 Fax: 846-1066
info@jherbertcorp.com

Visit us online:
www.jherbertcorp.com